

St John of Jerusalem. Built in 1840s, designed by Hakewell, using stone from Kent. The spire was demolished by a rocket in World War II. Monger House in Church Crescent, built in 1670 for the use of six poor men over the age of 60, was rebuilt in C19 using some of the original stone.

Well Street Common. Remained as open space because it was Lammas land; local people were able to use the Common between August and March. Short grass with mature and more recently planted trees (especially plane, sycamore, horse chestnut and ash). Mural in tunnel from Gascoyne Estate, created by residents, is made of 500 ceramic tiles inspired by the history and residents of the estate.

Victoria Park is in L B Tower Hamlets. The first truly 'public' park, created following a public petition to Queen Victoria in 1840. The site of a major demonstration in 1848, used for public meetings, debates, celebrations and concerts. Laid out with tree-lined perimeter road, lakes, band-stand, and flower beds. Lakes provide good habitat for water birds, such as great crested grebe, tufted duck and pochard. Fine collection of trees. Old English Garden with yew and box hedges, shrubs and flowers is a wonderful place to sit. Victoria Fountain presented in 1862 (see photo). Stone recesses or shelters from old London Bridge – found in a builder's yard.

Hertford Union Canal (also known as Duckett's Canal) opened in 1830 to connect Lea Navigation with Regent's Canal. Regent's Canal opened in 1820 to connect docks with west London and Midlands. Horse-drawn barges carried materials, such as coal and building materials. The building of the railways shortly afterwards meant that Hertford Union Canal was never a commercial success. Now a quiet route for walking and cycling, and good habitat for fish, aquatic and marginal plants, birds and butterflies.

This leaflet was prepared by Anne Woollett, Mike Trier & Gill Jackson for Hackney Parks Forum.

For copies of the leaflet see

www.hackneyenvironment.org.uk

Based on Collins mapping - www.collinsmaps.com. Printed by Redlin Print on ERA Recycled Silk (50% recycled/50% FSC paper).

Updated 01/2010.

MAP SERIES OF WALKS CONNECTING HACKNEY'S PARKS & OPEN SPACES



© Anne Woollett

The Victoria Fountain in Victoria Park, presented in 1862 by Angela Burdett-Coutts, a philanthropist from a rich banking family.

WALK 3: HACKNEY'S CANALS & SOUTHERN BORDERS

START: Church Cres, Well Street Common, E9
FINISH: Marshgate Bridge, Homerton Road, E9
DISTANCE: 5 kilometres (3 miles) approx.
Alt. circular route: 5.8 km (3½ miles) approx.

PUBLIC TRANSPORT (www.tfl.gov.uk – route maps)

Buses

Start: 277 & 425; (26, 30 & 388 to Cassland Rd).
Finish: 308 & W15; 236 & 276 (Lee Conservancy Rd).
Return: 236 or 276 from Lee Conservancy Rd to Eastway, then 388 to Park Rd.

Trains

BR stations: Hackney Wick; Homerton.

Lea Navigation Canal (Hackney Cut) runs from Lea Bridge Road to Bow Lock. Opened in 1768 to bypass Old River Lea, which was tidal on this stretch, and enable barges to travel more quickly. Many wood-yards, wharves and factories along its length. Some factories remain, but most barges on Canal are now leisure craft. Some plants (such as dwarf elder and Russian comfrey) probably arrived with cargoes. Giant hogweed is thought to have spread along the canals.

Hackney Marshes came into public ownership at the end of C19 when many of the mature trees (plane, ash, and rare black poplar) were planted. After World War II, rubble from buildings damaged by bombing in City was dumped. This raised the Marshes and improved their drainage – and ensured they are no longer 'marshy'. Well known for Park football; also used for cricket, canoeing, rowing, kite-flying, running, cycling, walking and hanging-out. The edges, managed for wildlife – with longer grass, trees and shrubs planted over last 20 years – and are now home to animals (squirrel, fox), birds (green woodpecker, long-tailed tit, warblers) and butterflies (meadow brown, speckled wood, brimstone). Community Tree Nursery near the Depot. Parts are separated from Main Marsh by river, canal and roads.

Arena Field. At southern end of Hackney Marshes, it was used mainly for recreation: cricket, football and walking. The trees and bushes near the Canal were home to many birds, including a colony of house sparrows whose numbers are diminishing in London. Now owned by the Olympic Delivery Authority (ODA) as land for the 2012 Olympic Games.

Wick Woodland is at a lower level from the rest of Hackney Marshes because no materials were dumped on it after World War II. It was used for football pitches until late 1980s. Edged with mature trees along Canal and Homerton Road (plane, black poplar and ash). In mid-1990s it was planted with native trees including native black poplars. Home to lots of birds, insects and plants. Managed with the help of the local community.

Mabley Green. Laid out mainly for sports, with some trees round the edge, and a pedestrian- and cycle-path. Red Path links Mabley Green to Eastway and Hackney Wick.

1 WELL STREET COMMON TO LEA NAVIGATION CANAL
From start at Church Crescent end of Well Street Common, follow path to centre of Common then fork right towards Victoria Park **a**. Cross Victoria Park Road and enter Park at Queens Gate (next to pub). Turn right along wide perimeter road. Turn right to Victoria Fountain (photo on front page).

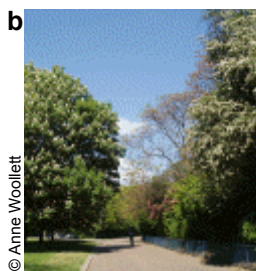
From the Fountain, take first path on left towards lake. Keep the lake on the left and playground on right **b**. Enter Old English Garden by gate at end of fencing on right. Go through Old English Garden **c**, leave at far end and turn left. Pass deer enclosure. At wide path in front of tennis courts, turn right. Take narrower path bearing right, in direction of tower blocks. Pass athletics track on right.

Cross perimeter road and leave Park by Lock House Gate. Go through gate on right towards canal. With Lock House on right, make a sharp left turn to join towpath along Hertford Union Canal.

Follow towpath under Parnell Road bridge, A12, lock and grey pedestrian bridge. At junction with Lea Navigation Canal, follow towpath left to White Post Lane. Turn right, cross Canal, turn right immediately and go down slope to Canal towpath. Turn right under the road and follow Lea Navigation Canal towpath and National Cycle Route 1.



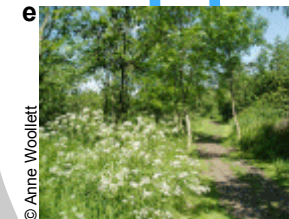
© Anne Woollett



© Anne Woollett



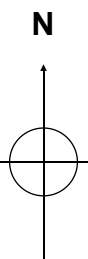
© Anne Woollett



© Anne Woollett



© Anne Woollett



KEY	
	Route of walk
	Circular route
	Other paths
	Borough boundary
	Steps or other access problems
	Alternative access

**W
A
L
K
3**

0 1/2 mile 1km

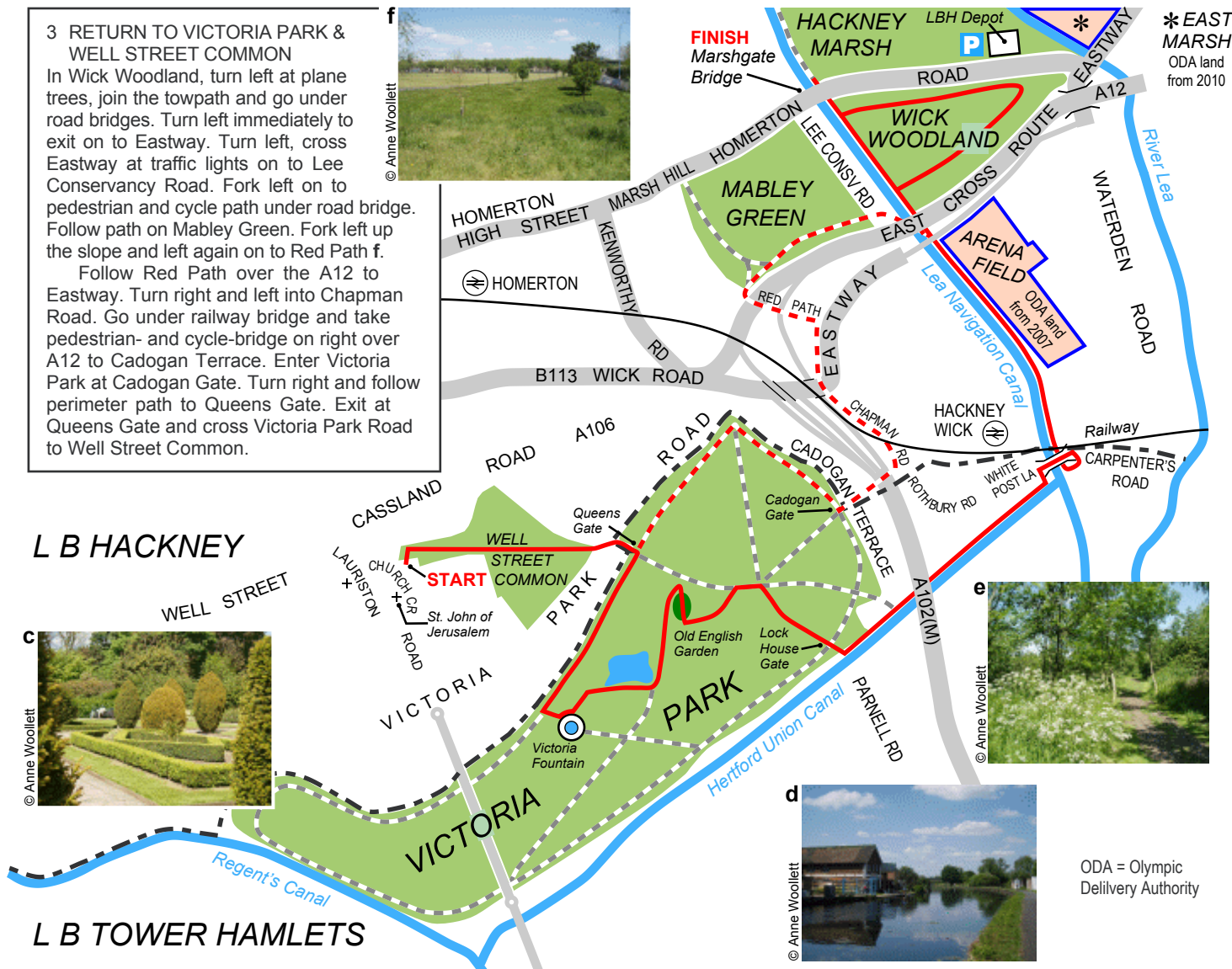
3 RETURN TO VICTORIA PARK & WELL STREET COMMON

In Wick Woodland, turn left at plane trees, join the towpath and go under road bridges. Turn left immediately to exit on to Eastway. Turn left, cross Eastway at traffic lights on to Lee Conservancy Road. Fork left on to pedestrian and cycle path under road bridge. Follow path on Mabley Green. Fork left up the slope and left again on to Red Path **f**.

Follow Red Path over the A12 to Eastway. Turn right and left into Chapman Road. Go under railway bridge and take pedestrian- and cycle-bridge on right over A12 to Cadogan Terrace. Enter Victoria Park at Cadogan Gate. Turn right and follow perimeter path to Queens Gate. Exit at Queens Gate and cross Victoria Park Road to Well Street Common.



© Anne Woollett



L B HACKNEY

L B TOWER HAMLETS

2 LEA NAVIGATION CANAL TO HACKNEY MARSHES

Continue on the Lea Navigation Canal towpath under the railway bridge and past Johnstone's boat house (1934) on left bank **d**.

Arena Field at the southern end of Hackney Marshes is on the right. At higher level, there was a large area of open space and, at lower level, hedges and bushes. Now ODA land (2007).

Continue under the road bridges (Eastway and A12) and fork right into Wick Woodland. Follow the winding path through the woodland **e**, take a sharp left and follow the main avenue towards Lea Navigation.

TO FINISH THE WALK HERE:

At the plane trees turn right for buses to Hackney. Follow path up the slope to Homerton Road and turn left.

For buses to Stratford and Leyton, follow the towpath under Homerton Road and turn right on to the north side of Homerton Road.

Follow the towpath north for Lea Bridge Road, buses, and Princess of Wales public house.

TO COMPLETE A CIRCULAR ROUTE, SEE BOX 3.

ODA = Olympic Delivery Authority

* EAST MARSH
ODA land from 2010